



LA CROSSE
COMMUNITY
FOUNDATION

For the Good of La Crosse County. Forever.

2018 Annual Impact Report



YOUR COMMUNITY FOUNDATION, YOUR IMPACT.



FOUNDATION LEADERSHIP

2019 Board of Directors

Sandy Brekke, *R.N., Chair*
Brent Smith, *J.D., Vice Chair*
Barb Erickson, *Secretary*
Taggart J. Brooks, *Ph.D., Treasurer*
Jamie Dahl
Sue Ernster, *FSPA*
Tom Kennedy, *CPA*
Rick Kyte, *Ph.D.*
Taylor Mathy
Joe Moua
Julie Nordeen, *J.D.*

Committee Members

Tom Berkedal
Sue Christopherson
Rusty Cunningham
Peter Hughes
David Morrison, *CPA*
Scott Rada
Dick Record
Tom Sleik, *J.D.*
Barbara Stewart
Tom Walch, *CPA*

Foundation Staff

Jamie Schloegel, *CFRE, Executive Director*
Katie Berkedal, *Program Director*
Stephanie Reinke, *CPA, Accountant*
Sherry Beames, *Executive Assistant/Office Manager*

IN THIS REPORT

What is a Community FoundationPage 2

Your Community Foundation at Work in 2018.....Page 4

2018 Grant Spotlights by Program AreaPage 6

2018 Grants & Scholarships List.....Page 10

Complete Funds ListingPage 14

2018 Donor RecognitionPage 20

2018 Financial Report.....Page 24

This annual report is published by La Crosse Community Foundation for friends and supporters of our mission.

EDITOR: Katie Berkedal

DESIGN & PHOTOGRAPHY: DigiSage, Inc

PHOTO CREDITS:

Mary Luebke of First Expressions Photography (Lueth Park photos)

Robert J. Hurt - Landscape Photography (Blufflands photo)

Elevate Media Group (LCF staff photos)

PRINTER: Crescent Printing Company

© 2019 La Crosse Community Foundation



YOUR COMMUNITY FOUNDATION, **YOUR IMPACT**

A letter from the Executive Director

JAMIE SCHLOEGEL, CFRE

Dear Friends,

The many challenges our La Crosse County communities are facing are messy and complicated. Homelessness, school achievement gaps, drug addiction, child abuse and pollution of our beautiful environment are all issues that cannot be fixed by one person or one organization alone.

That is exactly why the community foundation model is so important. It provides a platform for anybody interested in enhancing the quality of life in La Crosse County the ability to do so through charitable gifts of any size. By leveraging our collective gifts with the Foundation's expert knowledge of community needs and effective solutions, we can achieve greater impact now, and for future generations.

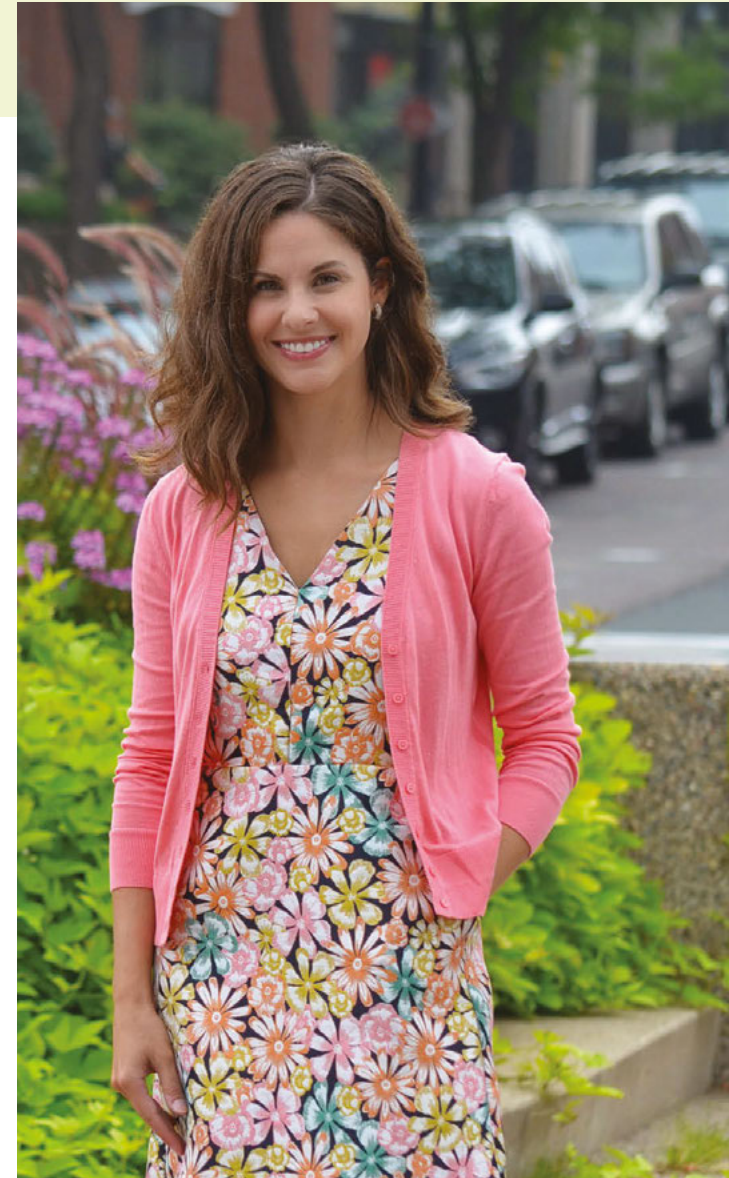
The list of community achievements we all benefit from today because of La Crosse Community Foundation donors is astounding. Funding the region's first home visiting program for families at risk of child abuse, initiation of the Women's Fund of Greater La Crosse and financing the start of the La Crosse Promise programs are just a few of the things past and current board members report being most proud of. This was all possible because of individuals like you; individuals who believe in giving back to the community where they have lived, worked, raised a family and retired.

So many of our donors tell me how wonderful it feels to give back. If you haven't tried it yet, don't wait to start. I promise you won't regret it. And for those who already do, thank you!

With gratitude,



P.S. I'm coming up on my first anniversary at the helm of the Foundation. It has been a pleasure meeting our donors and learning what we've accomplished together. Thanks for a warm welcome!





WHAT IS A COMMUNITY FOUNDATION?

Community foundations are grantmaking public charities dedicated to improving the lives of people in a defined local geographic area.

La Crosse Community Foundation is a charitable organization created through gifts from individuals who care about enhancing the greater La Crosse area. The donors' gifts are the building blocks of permanent endowment funds that the Foundation invests. The earnings from these funds are used to provide grants to qualified local nonprofits who are meeting identified community needs.

By starting an endowment fund or giving to an existing fund, donors become catalysts for good today and for generations to come. Any individual, family, business, or qualified charity can start a fund, which is managed by the Foundation in perpetuity. Gifts made to funds continue to grow and provide resources for the community forever. This is why we say we are *"For Good. Forever."*

Endowing for a Sustainable Future



What is an Endowment Fund?

It's a fund where the original gift...



is invested to grow over time...



with only the set distribution allowance spent from the fund annually...



so the fund will exist to support the causes donors love forever.

Year One



A fund is established with a **\$25,000** gift.

Initial gift grows & pays out a board-approved spending allowance each year

15 years later...



The fund made **\$20,169** in cumulative grant distributions, and has a **\$32,431** endowed fund balance.

Original balance & grants distributed is growing. The gift has more than **doubled**.

30 years* later...



The fund made **\$46,333** in cumulative grant distributions, and has a **\$42,070** endowed fund balance.

Original balance & grants distributed continue to grow. The gift is more than **3 times** the size of the original gift.

*Based on estimated annual growth rate of 7.5% and 4.75% spending allowance for grants.

WE MAKE IT EASY TO MAKE AN IMPACT

Since 1930, five generations of local philanthropists have chosen to enrich our community forever by becoming donors to La Crosse Community Foundation, each generation carrying the torch for the next. We invite anyone with charitable giving goals to meet with us to discuss how a gift can impact La Crosse County now, and in perpetuity.

La Crosse Community Foundation is here to make your vision for community impact easy and hassle-free. Our professional expertise guarantees a simple and flexible process. Donors lay out the dream, and together we make it happen.

HELP STRENGTHEN YOUR LA CROSSE COUNTY COMMUNITY *For Good. Forever.*

Contact the Foundation to learn more.

(608) 782-3223

Laxcommfoundation.com

Jamie@laxcommfoundation.com

WHY CHOOSE LA CROSSE COMMUNITY FOUNDATION?

You Receive Prompt, Personal Service

We can establish most funds in one brief meeting. We work to keep paperwork to a minimum, and communicate in simple, direct terms.

Your Gift Will Be Used Wisely

Because we pool contributions, investment management and administrative costs are kept to a minimum, so contributions directly support community impact.

Your Gift Will Address Emerging Needs

We take the driver seat to elicit positive change by convening resources from private donors and community businesses and deploying a coordinated approach around significant threats to community wellness.

You Have Many Giving Options

We offer many ways to give and a variety of fund types that provide a highly personal approach to giving. Our staff works one-on-one with donors to make sure they achieve their charitable giving goals today, and forever.

Your Gift Can Give Forever

Thanks to the power of endowment and time, gifts can make grants every year in perpetuity and still grow over time to continually increase community impact year after year. Donors are associated with **doing good** in La Crosse County, **forever**.





YOUR COMMUNITY FOUNDATION AT WORK

La Crosse Community Foundation is proud to serve as an ally in doing great work for our community. We work as a liaison between donors and local charitable organizations to ensure La Crosse County is a healthy, safe and vibrant place to live. Our primary role is to understand the breadth of opportunities for positive impact in our community and partner with generous donors to drive change *For Good. Forever.*



A surprise check is presented to Coulee Region Humane Society on Giving Tuesday by Jamie, Katie, and board members Sue Christopherson and Tom Kennedy.



Donors on a tour of local nonprofits with Jamie and Katie.



Students show Jamie around the GROW La Crosse pollinator patch at Hamilton/SOTA I Elementary School.

2018 ONE BIG THING



The beginning of “One Big Thing”

Under the leadership of Board Chair Sandy Brekke (lead population health consultant at Gundersen Health System and director of St. Clare Health Mission), La Crosse Community Foundation saw an opportunity in 2018 to reorganize our approach to instigating community impact where needed most. In addition to reacting to community needs through the competitive grant program, the board decided to proactively identify “One Big Thing” in our community that needed significant financial resources in order to make an impact on the problem. The first “One Big Thing” selected was the opioid crisis, and the Institute for Healthcare Improvement in Boston, Mass., was contracted to help guide our local efforts.

The funding

The board committed \$207,500 over three years from the Foundation’s unrestricted funding to halt the opioid crisis in our area. Gundersen Health System, Mayo Clinic Franciscan Healthcare, and La Crosse County Health Department partnered with LCF to help fund the \$400,000, three-year project.

The work

HEAL is identifying and filling service gaps in the continuum of care for people with substance abuse

disorders to fulfill the vision of eliminating addiction and the deaths and devastation it causes.

The four main goals of HEAL are: (1) limit the supply of opioids in our community, (2) raise awareness of the risk of opioid addiction, (3) identify individuals at high risk of developing opioid use disorder and, (4) treat individuals with opioid use disorder.

Today, over 100 members of our community including legislators, mayors, hospital executives, and many professionals who work directly with people who have substance abuse disorders are working together to end addiction locally. Nine work groups formed to fix identified gaps in our broken continuum of care.

The wins so far

The collaborative spirit between local healthcare providers is allowing significant improvements in the opioid system of care. Local healthcare providers are sharing information, have committed to following all CDC guidelines for prescribing opioids, and together will develop a shared opioid risk assessment tool for patients before prescribing opioids. Alliance to HEAL is also looking at how to close the gap in detox and rehabilitation (both inpatient and outpatient) care. That could include building a new facility in our area to help those at risk of dying from substance abuse disorders.



OTHER EXCITING IMPROVEMENTS INCLUDE:

- Opioid prescriptions in La Crosse County were down 26 percent in 2018
- Police deputy ride-alongs with Meals on Wheels volunteers to pick up unused prescription opioids for safe disposal
- Increasing patient education on alternative pain therapies
- The development of a uniform assessment and navigation tool that would ensure that no matter where a patient entered into the “opioid system of care” the same assessment tool would be used to determine the appropriate course of treatment
- Medication Assisted Treatment (MAT) providers from Gundersen Health System, Mayo Clinic Franciscan Healthcare, Addiction Medical Solutions, and La Crosse County Integrated Support & Recovery Services are collaborating to improve access to treatment, including in the jail

YOUR IMPACT THROUGH GRANT MAKING

\$2,979,012
awarded in 2018!

Thanks to our donors, 2018 was a phenomenal year for strengthening our community. Many fantastic projects were funded through grants to over 150 charitable organizations!

La Crosse Community Foundation has three types of grants:

(1)

Competitive grants
from unrestricted and
field of interest funds

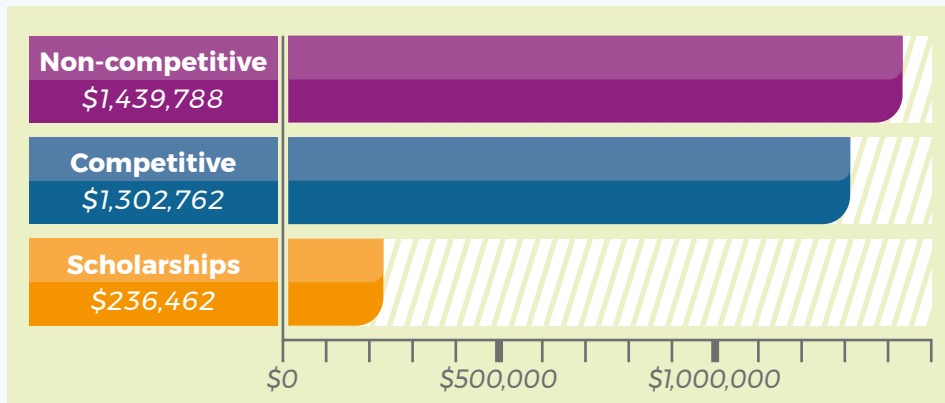
(2)

Non-competitive grants
from donor advised,
designated, and
passthrough funds

(3)

Scholarships

Let's break that down by dollars:



We are pleased to share stories that highlight the community impact being made across all eight program areas by our 2018 grantees.



Arts & Humanities | 5% | \$129,961



Community Improvement | 21% | \$568,233



Culture & Diversity | 6% | \$165,935



Education & Scholarships | 10% | \$559,173



Environment | 1% | \$28,555.00



Faith | 4% | \$261,762



Health & Human Services | 32% | \$991,799



Recreation & Wellness | 21% | \$273,594

PROGRAM AREA GRANT SPOTLIGHTS



ARTS & HUMANITIES

Curating history and creativity



Local children from area Boys & Girls Clubs enjoy a music lesson at Great River Folk Fest

Great River Folk Fest - Young Instrumentalist Folk Music Outreach

Funded by the Community Giving Fund & Maureen L. Kinney Fund

Great River Festival of Arts received a \$5,450 grant to provide folk music lessons to young students from area Boys & Girls Clubs during the August 2018 Great River Folk Fest at Riverside Park. Children participated in a master class and played instruments such as guitars and violins with a nationally touring folk performer.



COMMUNITY IMPROVEMENT

Transforming a better La Crosse



Catholic Charities - Collaborative Housing Support

Funded by Robert & Eleanor Franke Charitable Fund

Catholic Charities received a \$20,000 grant to support their collaborative housing program aimed at teaching families and individuals at risk of homelessness skills to better manage personal finances. Program participants receive financial and housing counseling, financial literacy education, and charitable assistance (rent, mortgage, food, utilities, etc.). The pairing of financial assistance with case management in this program is key to helping participants create lasting change and avoid other financial crises in the future.



CULTURE & DIVERSITY

Celebrating our differences



Students pose in front of the Frederick Douglass statue

B.L.A.C.K. - Legacy Keepers Trip

Funded by the Community Giving Fund, Bob and Jean Marck Family Fund, and Francie Ball & Mary O'Sullivan Fund

B.L.A.C.K. (Black Leaders Acquiring Collective Knowledge) received a \$51,100 grant to send 43 local black, biracial, and multiracial middle and high school students on a one-week tour across the American Southeast called the Legacy Keepers Trip. Students visited slave trails, Historically Black Universities and Colleges, the National Civil Rights and National African American museums, Dr. Martin Luther King, Jr.'s home and monument, and more. Many students identified the visit to the slave trails as the most memorable and powerful part of the trip. One student recalled the silence that fell over the group while on the trail, and the group's spontaneous humming of "Amazing Grace."



EDUCATION & SCHOLARSHIPS

Forming great futures

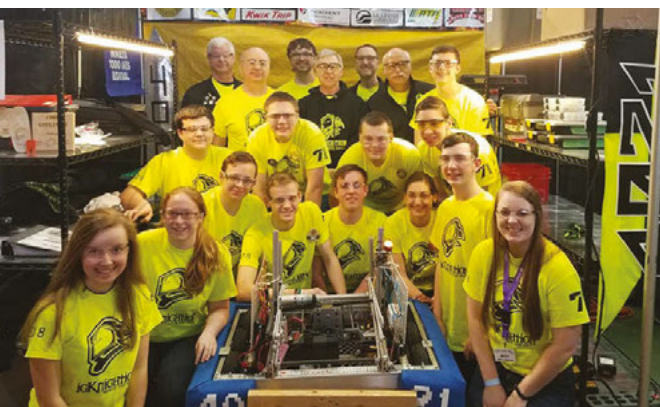


Students from the Holmen robotics team, the “Throwbotics” pose with their robot

Seven Rivers Robotics Coalition

Funded by the Louis I. Rehfuess Fund

2018 season support allowed Seven Rivers Robotics Coalition to promote STEM in our area and grow area teams at local high schools. They hosted their 2nd annual FIRST Robotics tournament in April of 2018 with over 50 teams competing from six states.



Students from the Onalaska Luther High School robotics team, “igKnighthood,” pose with their robot



ENVIRONMENT

Appreciating natural resources



Blufflands near Trempealeau, Wisconsin

Mississippi Valley Conservancy - Preserving Blufflands on the Mississippi River Project

Funded by the Fred and Mary Ann Funk Family Fund

Mississippi Valley Conservancy (MVC) received a grant to support their “Preserving Blufflands on the Mississippi River” project. The project had a special emphasis on buying blufflands to prevent frac sand mining. From MVC’s Executive Director Carol Abrahamson:

“It’s rare that anyone, including a land trust, has the opportunity to expand land protection and provide habitat for birds, animals, insects and public enjoyment. With gratitude from this gift, we can continue to protect this beautiful area we live in far into the future.”



FAITH

Transcending places of worship



Our Savior's Lutheran Church - Come for Supper

Funded by the Schilling Family Fund

Chip and Amy Schilling recommended a grant from their donor-advised fund to support the “Come for Supper” program at Our Savior’s Lutheran Church in La Crosse. “Come for Supper” is a free neighborhood meal program that serves over 200 people during their once-weekly meals.



Volunteers at Our Savior's Lutheran Church prepare a meal for “Come to Supper”



HEALTH & HUMAN SERVICES

Supporting our neighbors



APTIV - Housing for Individuals with Disabilities

Funded by the Robert and Eleanor Franke Charitable Fund

APTIV, formerly known as Riverfront, received a grant of \$30,518 to help purchase and renovate an adult family home to support individuals with disabilities to live and thrive in the La Crosse community. This renovation included making the bathrooms wheelchair accessible. Renovations were completed in early spring of 2019, and four adults will soon move in to receive 24/7 physical, behavioral, medical, and mental support.



RECREATION & WELLNESS

Inspiring healthy living



Outdoor Recreation Alliance - Lueth Park Bicycle Playground

Funded by the Community Giving Fund, Margery J. Stansfield Fund, and Chad Erickson Memorial Fund

Outdoor Recreation Alliance received a \$40,000 grant to support the installation of a bicycle playground at Lueth Park. The project was part of a larger effort by the City of La Crosse to revitalize Lueth Park by repairing the existing skatepark, beautification efforts, and removing an inadequate baseball field. The bicycle playground includes a large asphalt butterfly-shaped pump track. A pump track is a course made of mounds and berms that users zip around generating speed by pumping their body rather than pedaling. The Lueth Park pump track can be used with bikes, skateboards, scooters and other wheeled recreation, including adventurous stroller and wheelchair users.



Message from Program Director Katie Berkedal

A NONPROFIT RESOURCE BEYOND GRANTS

We live in a great community. We certainly are not shielded from the challenges most communities face, but what makes us unique is a widespread willingness to roll up our sleeves and work together to drive sustainable improvement for all too common issues.

La Crosse Community Foundation is fortunate to be able to give "jet fuel" to organizations and collaborations aimed at improving our community for all. In 2018 the Foundation awarded nearly \$3 million in grants and scholarships. This good work is only possible with the generosity of generations of philanthropically-minded citizens, including you.

The Foundation's goal is to expand the resources we offer to nonprofits beyond grants. In 2018, we saw the genesis of new programs at the Foundation aimed at helping local nonprofits build their capacity for fundraising. Ten local nonprofit organizations participated in our first ever Jumpstart Funding Program from Network for Good. Each nonprofit worked with a fundraising coach who helped them develop a more sophisticated fundraising plan. In 2019 we are hosting free quarterly workshops for nonprofits on topics such as financial management, grants 101, and more!

La Crosse Community Foundation is a growing resource for our hard-working nonprofit organizations. With your help, we will continue to match your financial support to proven community needs and provide educational tools to nonprofits to help them reach their goals.

We like to call ourselves the LCF Dream Team. We do this because our dreams for community improvement are big and you are the reason we can cast an audacious vision for our community's future. Together we will work *For Good. Forever.*

CONTACT KATIE BERKEDAL

(608) 782-3223 ext. 23

Katie@laxcommfoundation.com

2018 GRANTS & SCHOLARSHIPS

\$2,979,012
IN GRANTS AND SCHOLARSHIPS

7 RIVERS LGBTQ CENTER

Bonney Family Fund
Magerus-McKinney Fund

A CHANCE TO DANCE FOUNDATION INC.

Robert & Eleanor Franke Charitable Fund

A PLACE OF GRACE LTD.

Ellen and Henry Funk Family Fund
La Crosse Knights of Columbus Charity Fund
Audrey and Donald Medinger Family Fund

ABILITIES IN HARMONY INC.

Community Giving Fund-LCF

ADMINISTRATIVE ENDOWMENT FUND OF LCF

Maureen L. Kinney Fund

AFRICAN AMERICAN MUTUAL ASSISTANCE NETWORK

Community Giving Fund-LCF
Bob and Jean Marck Family Fund

AGAPE PREGNANCY RESOURCE CENTER INC.

George and Virginia Schneider Family Fund

AIDS RESOURCE CENTER OF WISCONSIN

Community Giving Fund-LCF
PMJ Fund

ALLEY CAT ALLIES INC.

Bob and Jean Marck Family Fund

AMERICAN INDIAN EDUCATION FUND

M. Elizabeth Cason Fund
Bob and Jean Marck Family Fund

AMERICAN LEGION BASEBALL

Corinne Zielke Fund

AMERICAN RED CROSS SOUTHWEST CHAPTER

M. Elizabeth Cason Fund
Chester and Veronica Ware Fund

ANIMAL RIGHTS COALITION

Bob and Jean Marck Family Fund

APTIV FOUNDATION

William & Cynthia Berg Family Fund
Ruth M. Dalton, M.D. Fund
Robert & Eleanor Franke Charitable Fund
Duane and Carol Taebel Fund
Stephen and Katherine Webster Fund

AQUINAS CATHOLIC SCHOOLS FOUNDATION, INC.

Fowler and Hammer Fund
Fred and Mary Ann Funk Family Fund

La Crosse Knights of Columbus Charity Fund
Susan M. Quillin Fund
Harry L. and Charlotte L. Woods Family Fund
Corinne Zielke Fund

ARTS AT LARGE INC.

Bob and Jean Marck Family Fund

AUBURN VALLEY HUMANE SOCIETY

Bradley and Lynn Sturm Family Fund

BENEDICTINE HEALTH SYSTEM

Community Giving Fund-LCF

BETHANY LUTHERAN HOMES, INC.

Bethany Lutheran Homes, Inc. Endowment
Connie Repnik Memorial Fund

BETHANY-ST. JOSEPH CARE CENTER

Bramschereiber Family Fund in Memory of Karl
Bramschereiber

BIG BROTHERS BIG SISTERS OF THE 7 RIVERS REGION

Eric and Sandy Brekke Family Fund
Brekke Family Fund
Robert & Eleanor Franke Charitable Foundation
Fund*
Robert & Eleanor Franke Charitable Fund
Community Giving Fund-LCF
Bob and Jean Marck Family Fund

BLACK LEADERS ACQUIRING COLLECTIVE KNOWLEDGE (B.L.A.C.K.) INC.

Francie Ball & Mary O'Sullivan Fund
Community Giving Fund-LCF
Bob and Jean Marck Family Fund

BLESSED SACRAMENT CATHOLIC CHURCH

La Crosse Knights of Columbus Charity Fund
Chester and Veronica Ware Fund

BOYS & GIRLS CLUBS OF GREATER LA CROSSE

Boys & Girls Clubs of La Crosse Fund
Dr. Archie and Rosemary Britt Family Fund
Erickson Sisters' Fund
Robert & Eleanor Franke Charitable Fund
Community Giving Fund-LCF
Norman L. Gillette, Sr. Family Fund
Kerbaugh Family Fund
Lommen Boys & Girls Club Scholarship
Bob and Jean Marck Family Fund
Amie L. Mathy Center for Recreation and
Education Endowment
Audrey and Donald Medinger Family Fund
Will and Charlie Nordeen "May the Force Be
With You"

Schilling Family Fund
Corinne Zielke Fund

CAPABLE CANINES OF WISCONSIN

Robert & Eleanor Franke Charitable Fund

CARLETON COLLEGE

Schilling Family Fund

CATHEDRAL OF SAINT JOSEPH THE WORKMAN

Davy Family Fund
La Crosse Knights of Columbus Charity Fund

CATHOLIC CHARITIES OF THE DIOCESE OF LA CROSSE

Robert & Eleanor Franke Charitable
Foundation Fund*
Robert & Eleanor Franke Charitable Fund
Community Giving Fund-LCF
La Crosse Knights of Columbus Charity Fund
Audrey and Donald Medinger Family Fund
Bradley and Lynn Sturm Family Fund

CHAD ERICKSON MEMORIAL PARK FUND OF LCF

Chad's Champs Fund for the Miracle Field

CHILDREN'S MUSEUM OF LA CROSSE, INC.

Children's Museum of La Crosse Endowment
Community Giving Fund-LCF
Hutson Family Fund
George and Virginia Schneider Family Fund
Fred and Deb Wakeen Fund

CHRIST EPISCOPAL CHURCH

Christ Episcopal Church Historic Preservation
Endowment
Wayne J. Hood Fund
Father Christopher Pratt Memorial Fund

CIA SIAB INC.

La Crosse SOUP Fund
Bob and Jean Marck Family Fund

CITY OF LA CROSSE

Community Giving Fund-LCF
Pettibone Park Commission Endowment

CIVIL AIR PATROL-WISCONSIN WING

Barbara and Dave Erickson Fund

COMMUNITY GIVING FUND-LA CROSSE COMMUNITY FOUNDATION

Dr. Gunnar and Mary Baldwin Gundersen
Memorial Fund
Dr. David L. and Sacia B. Morris Fund
Schilling Family Fund

COULEE COUNCIL ON ADDICTIONS

Anonymous Fund
Coulee Council on Addictions Endowment
Fowler and Hammer Fund
Robert & Eleanor Franke Charitable Fund
Dr. Frank Furlano Family Fund
Norman L. Gillette, Sr. Family Fund
Jacob Christian Lillejord Memorial Fund aka
"Jacob's Ladder"
Audrey and Donald Medinger Family Fund
Schilling Family Fund

COULEE REGION HUMANE SOCIETY

M. Elizabeth Cason Fund
Robert & Eleanor Franke Charitable Fund
Kerbaugh Family Fund
Duane and Carol Taebel Fund

COULEECAP, INC.

MLB MKB Bottcher Family Fund
Robert & Eleanor Franke Charitable Fund
Community Giving Fund-LCF
Norman L. Gillette, Sr. Family Fund
Johns Flaherty Collins-Michael Stoker Memorial

COUNCIL ON FOUNDATIONS

Community Giving Fund-LCF

DIOCESE OF LA CROSSE

Davy Family Fund
Fowler and Hammer Fund
La Crosse Knights of Columbus Charity Fund
Father Christopher Pratt Memorial Fund

EMERGENCY FOOD BASKET, INC.

M. Elizabeth Cason Fund

ENGLISH LUTHERAN CHURCH

Tom and Ann Monson Family Fund
Duane and Carol Taebel Fund

ESSENTIAL HEALTH CLINIC

Anonymous Fund
Richard W. Brown Family Fund
Barbara and Donald Frank Family Fund

FAITH UNITED METHODIST CHURCH

Dr. Archie and Rosemary Britt Family Fund

FAMILY & CHILDREN'S CENTER

American Association of University
Women-La Crosse Branch
Dr. Archie and Rosemary Britt Family Fund
Ardus and John Cleveland Family Fund
La Crosse Family and Children's Center
Endowment



Kerbaugh Family Fund
Milo and Beverly Mayer Mach Family Fund
Bernadette Teff Family Fund

FELINE RESCUE INC.

Bob and Jean Marck Family Fund

FINE ARTS FOUNDATION, INC.

Bob and Jean Marck Family Fund

FIRST CONGREGATIONAL CHURCH

William C. Jr. and Scott Pickett Memorial Fund

FIRST EVANGELICAL LUTHERAN CHURCH

Harold "Pete" Isenman Fund

FIRST LUTHERAN CHURCH-CLOTHES CLOSET

Robert & Eleanor Franke Charitable Fund

FIRST PRESBYTERIAN CHURCH

Harry L. and Charlotte L. Woods Family Fund

FRANCISCAN SISTERS OF PERPETUAL ADORATION

Guentner-Froegel Family Fund
Garrity-Gokey Fund
Community Giving Fund-LCF
La Crosse Knights of Columbus Charity Fund
Bob and Jean Marck Family Fund
George and Virginia Schneider Family Fund
Morris A. and Roberta Anne Severson Fund

FRANCISCAN SPIRITUALITY CENTER

The Covenant Fund
Robert & Eleanor Franke Charitable Fund
Community Giving Fund-LCF

FREEDOM HONOR FLIGHT INC.

Robert & Eleanor Franke Charitable Fund

FRIENDS OF THE BLUFFLANDS INC.

Shelterbelt Fund

FRIENDS OF THE MISSISSIPPI RIVER

Bob and Jean Marck Family Fund

FRIENDS OF THE UPPER MISSISSIPPI FISHERY SERVICES

Roland Beranek Fund

FRIENDS OF WEST SALEM BASEBALL

Corinne Zielke Fund

GATEWAY AREA BOY SCOUTS

Davy Family Fund
Robert & Eleanor Franke Charitable Fund
Wayne J. Hood Fund

GIRL SCOUTS OF WISCONSIN-BADGERLAND COUNCIL

Schilling Family Fund

GOOD FIGHT COMMUNITY CENTER INC.

Community Giving Fund-LCF

La Crosse SOUP Fund
Audrey and Donald Medinger Family Fund
David R. Morrison Family Fund

GOODWILL INDUSTRIES NORTH CENTRAL WISCONSIN

Community Giving Fund-LCF
June Kjome Justice and Peace Fund

GREAT RIVER FESTIVAL OF ARTS INC.

Community Giving Fund-LCF
Maureen L. Kinney Fund

GREAT RIVERS UNITED WAY

Anonymous Fund
Community Giving Fund-LCF
James and Ellen Heinecke Fund
Dr. David L. and Sacia B. Morris Fund
Schilling Family Fund
Jack and Marti Schwem Fund

GROW LA CROSSE INC.

Brekke Family Fund
Myrick Hixon EcoPark Fund
George and Virginia Schneider Family Fund
Strong Girls Strong Women Fund
Shelterbelt Fund

GUNDERSEN MEDICAL FOUNDATION

Davy Family Fund
Fowler and Hammer Fund
Ellen and Henry Funk Family Fund
Fred and Mary Ann Funk Family Fund
Dr. Gunnar and Mary Baldwin Gundersen Memorial Fund
Connie Repnik Memorial Fund
Schilling Family Fund
Duane and Carol Taebeel Fund
Chester and Veronica Ware Fund
Harry L. and Charlotte L. Woods Family Fund

HABITAT FOR HUMANITY-LA CROSSE AREA

Eric and Sandy Brekke Family Fund
Robert & Eleanor Franke Charitable Fund
Kerbaugh Family Fund
La Crosse Knights of Columbus Charity Fund

HMOOB CULTURAL AND COMMUNITY AGENCY (HCCA)

Audrey and Donald Medinger Family Fund

HOLMEN AREA COMMUNITY CENTER INC.

Graw Family Fund

HOLY TRINITY CATHOLIC CHURCH

La Crosse Knights of Columbus Charity Fund
Susan M. Quillin Fund

HONOR THE EARTH

Bob and Jean Marck Family Fund

HORSESENSE FOR SPECIAL RIDERS, INC.

Harold "Pete" Isenman Fund
Bob and Jean Marck Family Fund

HUNGER TASK FORCE OF LA CROSSE, INC.

Community Giving Fund-LCF
Kerbaugh Family Fund
Bob and Jean Marck Family Fund
George and Virginia Schneider Family Fund

IM EDUCATION, INC.

Community Giving Fund-LCF

JIM'S GROCERY BAG FUND OF LCF

Bob and Jean Marck Family Fund
Sullivan Fund

JOE WAS JUST JOE FOUNDATION INC.

Schilling Family Fund

JOHNS FLAHERTY COLLINS-MICHAEL STOKER MEMORIAL OF LCF

Sullivan Fund

JUNE KJOME JUSTICE AND PEACE FUND OF LCF

Sullivan Fund

JUNIOR ACHIEVEMENT OF WISCONSIN

Schilling Family Fund

JUVENILE DIABETES RESEARCH FOUNDATION INTERNATIONAL

Howard Dahl Fund
Schilling Family Fund
Bradley and Lynn Sturm Family Fund

KIDS AND MENTORS OUTDOORS (KAMO)

Fred and Mary Ann Funk Family Fund

LA CRESCENT AREA EVENT CENTER INC.

Garrity-Gokey Fund

LA CROSSE AREA AUTISM FOUNDATION INC.

Russell G. and Gail K. Cleary Fund
Roy E. and Lillian Hope Kumm Fund

LA CROSSE AREA FAMILY YMCA

Davy Family Fund
Barbara and Dave Erickson Fund
Community Giving Fund-LCF
Norman L. Gillette, Sr. Family Fund
Wayne J. Hood Fund
Harold "Pete" Isenman Fund
Myrick Hixon EcoPark Fund
Schilling Family Fund
Mary Grace Sieber Fund
YMCA Fund

LA CROSSE AREA SUICIDE PREVENTION INITIATIVE, INC.

Todd and Deb Mahr Family Fund

LA CROSSE AREA SYNOD ELCA

Global Awareness Fund

LA CROSSE CHAMBER CHORALE, INC.

Bonney Family Fund
La Crosse Chamber Chorale Fund

LA CROSSE CO. ASSOC. HOME & COMMUNITY ED.

Robert & Eleanor Franke Charitable Fund

LA CROSSE COMMUNITY THEATRE

Gretchen Guernsey Leigh Fund

LA CROSSE CONCERT BAND

Ella F. Ambrosius Fund
Bob and Jean Marck Family Fund
Sundet Family Fund

LA CROSSE COUNTY

Community Giving Fund-LCF
Erickson Sisters' Fund
Robert & Eleanor Franke Charitable Foundation Fund*

LA CROSSE COUNTY HISTORICAL SOCIETY

Davy Family Fund
Anita and Robert Funke Historical Society Fund
Community Giving Fund-LCF
La Crosse County Historical Society Endowment
June Kjome Justice and Peace Fund
Gretchen Guernsey Leigh Fund
Milo and Beverly Mayer Mach Family Fund
Magerus-McKinney Fund

LA CROSSE JAIL MINISTRY

Robert & Eleanor Franke Charitable Fund
La Crosse Knights of Columbus Charity Fund

LA CROSSE NEIGHBORHOODS INC.

Global Awareness Fund

LA CROSSE PROMISE INC.

Community Giving Fund-LCF
Jack and Marti Schwem Fund

LA CROSSE PUBLIC EDUCATION FOUNDATION, INC.

The Covenant Fund
Fowler and Hammer Fund
Maureen and Robert Freedland-LPEF Fund for Studies of the Shoah
Robert & Eleanor Franke Charitable Fund
Community Giving Fund-LCF
Sally A. Grimsli Memorial Fund for Northside Elementary
Dr. Gunnar and Mary Baldwin Gundersen Memorial Fund
Kids for Kids Fund-LPEF
June Kjome Justice and Peace Fund

2018 GRANTS & SCHOLARSHIPS

La Crosse Public Education Foundation
Endowment
La Crosse Public Education - Swantz Fund
David R. Morrison Family Fund
Schilling Family Fund
George and Virginia Schneider Family Fund
Mary Grace Sieber Fund
Duane and Carol Taebeel Fund
Carol and Duane Taebeel Family Fund

LA CROSSE PUBLIC LIBRARY

Dr. Gunnar and Mary Baldwin Gundersen
Memorial Fund

LA CROSSE SOUP FUND OF LCF

La Crosse Community Foundation

LA CROSSE SYMPHONY ORCHESTRA, INC.

Ella F. Ambrosius Fund
Ruth M. Dalton, M.D. Fund
Community Giving Fund-LCF
Marie Louise Lokken Fund

LA CROSSE YOUTH BASEBALL

Corinne Zielke Fund

LA CROSSE YOUTH SOCCER PARENTS ASSOC INC.

National Youth Sports Program Fund

LA CROSSES LIGHTHOUSE INC.

Community Giving Fund-LCF

LEAGUE OF WOMEN VOTERS

Bob and Jean Marck Family Fund

LOGAN OPPORTUNITY SCHOLARSHIP FUND OF LCF

Roland and Janeane Solberg Family Fund

MARQUETTE UNIVERSITY

Davy Family Fund

MARY MOTHER OF THE CHURCH

La Crosse Knights of Columbus Charity Fund

MAYO CLINIC HEALTH SYS. FRANCISCAN HEALTHCARE FUND.

Ruth M. Dalton, M.D. Fund

MAYO CLINIC HEALTH SYSTEM FRANCISCAN MEDICAL CENTER INC.

Davy Family Fund
Fowler and Hammer Fund
Schilling Family Fund

MENTAL HEALTH COALITION

Schilling Family Fund

MID WEST MUSIC FEST

Community Giving Fund-LCF

MIDWEST ENVIRONMENTAL ADVOCATES

Anonymous Fund

MISSISSIPPI VALLEY CONSERVANCY

Fowler and Hammer Fund
Robert & Eleanor Franke Charitable Fund
Fred and Mary Ann Funk Family Fund
Nancy Fulkerson Hill and Edwin L. Hill Fund
Milo and Beverly Mayer Mach Family Fund

MOBILE MEALS OF LA CROSSE

Bob and Jean Marck Family Fund
Stephen and Katherine Webster Fund

MONROE COUNTY SHELTER CARE INC.

American Association of University Women-
La Crosse Branch

NAMI LA CROSSE COUNTY INC.

Todd and Deb Mahr Family Fund
William C. Jr. and Scott Pickett Memorial Fund

NEIL P. HENGST SCHOLARSHIP FUND OF LCF

Neil, Andy and Geri Hengst Family Fund

NEW HORIZONS SHELTER & OUTREACH CTRS.

American Association of University Women-
La Crosse Branch

William & Cynthia Berg Family Fund
Blahnik-Naugler Help Fund for Women
Richard W. Brown Family Fund
M. Elizabeth Cason Fund
Barbara and Donald Frank Family Fund
Robert & Eleanor Franke Charitable Fund
Rev. Ronald and Merle Gustafson Fund
James and Ellen Heinecke Fund
Milo and Beverly Mayer Mach Family Fund
Chester and Veronica Ware Fund

NO KILL LAW & ADVOCACY CENTER

Bob and Jean Marck Family Fund

NORSKEDALEN NATURE AND HERITAGE CENTER, INC.

Roland Beranek Fund
Coulee Region White Cane Club Fund
Community Giving Fund-LCF
Alice O. Gordon & Viola M. Forshler Fund

OKTOBERFEST USA GEMUTLICHKEIT FOUNDATION

Brian and Karen Rude Family Fund

ONALASKA AMERICAN LEGION POST 336

Harold E. Lemke Fund

ONALASKA FOUNDATION FOR EDUCATIONAL EXCELLENCE, INC.

Onalaska Foundation for Educational
Excellence, Inc. Fund

ONALASKA MIDDLE SCHOOL PTO

Harold E. Lemke Fund

OUR SAVIOR'S LUTHERAN CHURCH

Kathryn, Olaus, and Dena Cappelen Fund
The Covenant Fund
Connie Repnik Memorial Fund
Schilling Family Fund

OUTDOOR RECREATION ALLIANCE OF THE SEVEN RIVERS REGION, INC.

Chad Erickson Memorial Fund
Community Giving Fund-LCF
Shelterbelt Fund

PHYSICIANS COMMITTEE FOR RESPONSIBLE MEDICINE

Bob and Jean Marck Family Fund

PLANNED PARENTHOOD MINNESOTA, NORTH DAKOTA, SOUTH DAKOTA

Bob and Jean Marck Family Fund

PLANNED PARENTHOOD OF WISCONSIN, INC.

Bob and Jean Marck Family Fund

PROVIDENCE SCHOOL INC.

La Crosse Knights of Columbus Charity Fund

RIVERSIDE INTERNATIONAL FRIENDSHIP GARDENS

Fred and Mary Ann Funk Family Fund

ROBERT & ELEANOR FRANKE CHARITABLE FUND

Robert & Eleanor Franke Charitable
Foundation Fund*

RONALD MCDONALD HOUSE CHARITIES OF W WISCONSIN & SE MN INC.

Schilling Family Fund

RONCALLI NEWMAN PARISH

La Crosse Knights of Columbus Charity Fund

ROTARY WORKS FOUNDATION, INC.

Guentner-Froegel Family Fund

SACRED HEART HOSPITAL-HOSP. SISTERS 3RD ORDER-ST FRANCIS

Schilling Family Fund

SCHOOL DISTRICT OF BANGOR

Community Giving Fund-LCF
Jim's Grocery Bag-Schroeder Fund

SCHOOL DISTRICT OF HOLMEN

Community Giving Fund-LCF
Global Awareness Fund
Jim's Grocery Bag-Schroeder Fund

SCHOOL DISTRICT OF LA CROSSE

Julianna and Steven Blanchar Kindergarten
Trip Fund

Community Giving Fund-LCF
Global Awareness Fund
James Gokey Endowment Fund aka Jim's
Grocery Bag Fund
Jim's Grocery Bag-Schroeder Fund
La Crosse Public Elementary School Field
Trip Fund
George and Virginia Schneider Family Fund
Mary Grace Sieber Fund
Corinne Zielke Fund

SCHOOL DISTRICT OF ONALASKA

Barbara and Dave Erickson Fund
Community Giving Fund-LCF
Global Awareness Fund
Jim's Grocery Bag-Schroeder Fund
Harold E. Lemke Fund
George and Virginia Schneider Family Fund
Tom & Trudy Kennedy Endowment Fund aka
Tom's Grocery Bag Fund

SCHOOL DISTRICT OF WEST SALEM

Community Giving Fund-LCF
Jim's Grocery Bag-Schroeder Fund
Corinne Zielke Fund

SEVEN RIVERS ROBOTICS COALITION INC.

Louis I. Rehffuss Fund

SHE ROCK SHE ROCK

Bob and Jean Marck Family Fund

SHELTER DEVELOPMENT INC.

Bob and Jean Marck Family Fund
Shelterbelt Fund

SHRINE OF OUR LADY OF GUADALUPE

La Crosse Knights of Columbus Charity Fund

SHRINERS HOSPITAL FOR CHILDREN

Connie Repnik Memorial Fund

SOUTHERN POVERTY LAW CENTER, INC.

Bob and Jean Marck Family Fund

ST. CLARE HEALTH MISSION

James and Elynn Ash Family Fund
M. Elizabeth Cason Fund
Barbara and Donald Frank Family Fund
Robert & Eleanor Franke Charitable Fund
Gretchen Guernsey Leigh Fund
Schilling Family Fund
Jack and Marti Schwem Fund

ST. LOUIS UNIVERSITY

Community Giving Fund-LCF

ST. OLAF COLLEGE

Schilling Family Fund

ST. PAUL EVANGELICAL LUTHERAN CHURCH

St. Paul's Evangelical Lutheran Church of
Onalaska Fund

**STOUT UNIVERSITY FOUNDATION INC.**

Schilling Family Fund

THE ANIMAL SANCTUARY OF ST CROIX VALLEY

Bob and Jean Marck Family Fund

THE ELEPHANT SANCTUARY IN TENNESSEE

Bob and Jean Marck Family Fund

THE PARENTING PLACE

Robert & Eleanor Franke Charitable Fund
 Community Giving Fund-LCF
 Bob and Jean Marck Family Fund
 Rudy and Jean Schnurrer Fund

THE PUMP HOUSE REGIONAL ARTS CENTER, INC.

Community Giving Fund-LCF

THE SALVATION ARMY

M. Elizabeth Cason Fund
 Davy Family Fund
 Fowler and Hammer Fund
 Robert & Eleanor Franke Charitable Fund
 Ellen and Henry Funk Family Fund
 Graw Family Fund
 Hutson Family Fund
 Kerbaugh Family Fund
 Joseph W. Kotnour Family Fund
 Salvation Army, La Crosse WI Endowment
 George and Virginia Schneider Family Fund
 Roland and Janeane Solberg Family Fund
 Steven P. and Suzanne R. Tanke Family Fund
 Fred and Deb Wakeen Fund
 Chester and Veronica Ware Fund

THE WATER PROJECT, INC.

Bradley and Lynn Sturm Family Fund

TRINITY LUTHERAN CHURCH

Robert & Eleanor Franke Charitable
 Foundation Fund*
 Roland and Janeane Solberg Family Fund

UNITED FUND FOR THE ARTS AND HUMANITIES

Ardus and John Cleveland Family Fund
 Norman L. Gillette, Sr. Family Fund
 Milo and Beverly Mayer Mach Family Fund
 Dr. David L. and Scia B. Morris Fund
 Schilling Family Fund
 United Fund for the Arts and
 Humanities Endowment

UNIVERSITY OF WISCONSIN FOUNDATION

Davy Family Fund

US FRIENDS OF DAVID SHELDRICK WILDLIFE TRUST INC.

Bob and Jean Marck Family Fund

UW-LA CROSSE

La Crosse Bridge Builders Fund
 Global Awareness Fund

UW-LA CROSSE FOUNDATION

American Association of University Women-
 La Crosse Branch
 William S. Case Scholarship
 Davy Family Fund
 Community Giving Fund-LCF
 Norman L. Gillette, Sr. Family Fund
 Gertrude Salzer Gordon Concert in the Park Fund
 Gertrude and Donald "Sandy" Gordon Jazz
 Scholarship
 Betty and Dale Kendrick Art Scholarship
 Inez and Nick Konas Memorial Scholarship
 Jason David Koppelman Scholarship
 Logan High School Math and Computer
 Science Scholarship
 Bob and Jean Marck Family Fund
 Mitchell-Kruck Scholarship
 Robert and Ruth Pribek Memorial Scholarship
 Sundet Family Fund
 Donald P. Weber Veteran Scholarship Fund

VERDECARES INC.

Graw Family Fund

VERNON COUNTY HUMANE SOCIETY

James D. and Janice M. Hanesworth Fund

VITERBO UNIVERSITY

Ella F. Ambrosius Fund
 William S. Case Scholarship
 Ruth M. Dalton, M.D. Fund
 Fowler and Hammer Fund
 Community Giving Fund-LCF
 Norman L. Gillette, Sr. Family Fund
 Glendenning Family Fund
 Todd and Deb Mahr Family Fund
 Bob and Jean Marck Family Fund
 Amie L. Mathy Center for Recreation and
 Education Endowment
 Richard T. Record Fund
 Donald P. Weber Veteran Scholarship Fund
 Corinne Zielke Fund

WAFER, INC.

James and Ellyn Ash Family Fund
 William & Cynthia Berg Family Fund
 M. Elizabeth Cason Fund
 Robert & Eleanor Franke Charitable Fund
 Ellen and Henry Funk Family Fund
 Kerbaugh Family Fund
 La Crosse Knights of Columbus Charity Fund
 Bob and Jean Marck Family Fund

WAKE FOREST UNIVERSITY

Schilling Family Fund

WASHBURN NEIGHBORHOOD ASSOCIATION

Ardus and John Cleveland Family Fund

WEIGH OF LIFE

Schilling Family Fund

WEST SALEM PARKS & RECREATION DEPARTMENT

Corinne Zielke Fund

WESTERN TECHNICAL COLLEGE FOUNDATION

American Association of University Women-
 La Crosse Branch
 Scott and Heidi Blanke Family Fund
 Community Giving Fund-LCF
 Ernest and Olive Gershon Scholarship
 Norman L. Gillette, Sr. Family Fund
 Glendenning Family Fund
 Bob and Jean Marck Family Fund
 Don Olson Hospitality Scholarship
 Donald P. Weber Veteran Scholarship Fund

WISCONSIN ALLIANCE FOR WOMEN'S HEALTH INC.

Community Giving Fund-LCF

WISCORPS, INC.

The Bonney Family Fund

WOMEN'S FUND OF GREATER LA CROSSE FUND OF LCF

Lillian Kaplan Fund

WOMEN'S FUND OF GREATER LA CROSSE, INC.

CMG Women's Fund
 Jean L. Foss-Norene A. Smith Fund-WF
 Barbara and Donald Frank Family Fund
 Norman L. Gillette, Sr. Family Fund
 Betty Levinstein Fund-WF
 Bob and Jean Marck Family Fund
 Joan and Paul Schoenfeld Fund-WF
 Stansfield Family Fund
 Pamela and Richard Strauss Fund-WF
 Women's Fund of Greater La Crosse
 Women's Fund of the La Crosse Community
 Foundation
 Roberta Zurn Fund

YOUR NORTHSIDE NEIGHBORHOOD CLINIC INC.

Community Giving Fund-LCF

YWCA LA CROSSE

Anonymous Fund
 American Association of University Women-
 La Crosse Branch
 Robert & Eleanor Franke Charitable
 Foundation Fund*
 Community Giving Fund-LCF
 Shelterbelt Fund

SCHOLARSHIPS TO STUDENTS GRADUATING FROM AREA HIGH SCHOOLS

American Association of University Women-
 La Crosse Branch-Scholarship Fund
 Alfred W. Rice Scholarship Fund
 Borton Construction Scholarship-Holmen
 High School
 Borton Construction Scholarship-Logan
 High School
 Borton Construction Scholarship-Onalaska Luther
 High School
 Valerie Burman Art Plus Scholarship Fund
 Community Giving Fund-LCF
 James R. Conway Class of '55 Logan High School
 Scholarship
 Coulee Region Engineering Scholarship
 Peter DeCicco Scholarship
 Carol A. Dobrunz Memorial Scholarship
 Family Playhouse Scholarship
 D. E. Field Scholarship
 Robert & Eleanor Franke Charitable
 Foundation Fund*
 Glendenning Family Fund
 Kent Grimsli Memorial Music Scholarship
 Ann Henke Scholarship Fund
 Josephine Hintgen Scholarship
 Hood-Weese-Miller Scholarship
 Jay F. Leinfelder, Jr. Memorial Scholarship
 Harold E. Lemke Fund
 Logan Opportunity Scholarship
 Kaitlin Elizabeth Mahr Memorial Scholarship
 Nicholas Byrne Padesky Scholarship Fund
 Norma J. Valley Panka & William J. Panka
 Scholarship Fund
 John and Adeline Rice Scholarship
 Rockin Robyn Scholarship
 James C. Sauer Scholarship
 Ralph Schultz Scholarship
 John and Ruth Sherman Scholarship
 Burton C. Smith Scholarship
 Randy Smith Leadership Fund
 William E. Storandt Scholarship
 William P. and Lorna C. Vafeas Art Scholarship
 Nina Vanderzee Memorial Scholarship
 Clayton and Vivian Veum Scholarship
 Mary Louisa Whitbeck and Frederick T. Whitbeck
 Scholarship
 David and Sandra Whiteley Scholarship

**A supporting organization of the La Crosse
 Community Foundation*

FUNDS OF LA CROSSE COMMUNITY FOUNDATION

La Crosse Community Foundation has helped generous people be catalysts for good for over five generations. We are proud to partner with hundreds of committed individuals and families to design giving plans that support the causes, agencies or issues they care about now and into the future.

We owe a debt of gratitude to all our donors whose thoughtful philanthropic planning has resulted in the establishment of the following funds.

Donor Advised Funds

The most flexible and personal fund type for donors who desire the privilege to recommend annual grants from the fund's earnings to organizations that best fit their interests.



\$539,100 in
Donor Advised Grants

AAUW (American Association of University Women)
La Crosse Branch Fund (2010)

James and Ellyn Ash Family Fund (2003)

Francie Ball & Mary O'Sullivan Fund (2016)

Walter F. Baltz Family Fund (1987)

Jean Gitz Bassett Fund (2006)

William & Cynthia Berg Family Fund (2013)

Blahnik-Naugler Help Fund For Women (2003)

Bonney Family Fund (2015)

MLB-MKB Bottcher Family Fund (2004)

Bramschreiber Family Fund in Memory of Karl
Bramschrieber (2016)

New Fund in 2018

Brekke Family Fund

Sandy Brekke established this fund to benefit public health initiatives in La Crosse County. Sandy will advise grants from this fund along with her three children: Andrew, Hannah, and Sarah.

Eric and Sandy Brekke Family Fund (2013)

Richard W. Brown Family Fund (2007)

New Fund in 2018

Daniel's Song

Mark and Minda Chamberlain established this fund in memory of their son, Daniel, who lost his life May 19, 2017 at the age of 27 after struggling with depression and addiction. Daniel was a light to everyone who knew him. He had a gift for music and a tremendous aptitude for musical instruments. He eventually learned to write and record his own songs, singing and playing each part. Music was the most important thing to him, therefore Mark and Minda plan to use this fund to support music programs that help individuals struggling with mental health and addiction challenges.

Chad's Champs Fund for the Miracle Field (retired 2018)

Christ Episcopal Church Historic Preservation Fund (2006)

Russell G. and Gail K. Cleary Fund (1986)

Ardus and John Cleveland Family Fund (2012)

The Covenant Fund (2016)

Davy Family Fund (1993)

Durtsche Family Fund (2004)

Barbara and Dave Erickson Fund (2004)

Chad Erickson Memorial Fund (2003)

Chad Erickson Memorial Park Fund (2011)

The Erickson Sisters' Fund (2004)

Fowler and Hammer Fund (2005)

Barbara and Donald Frank Family Fund (1995)

Maureen and Robert Freedland Community Fund for
Studies of the Shoah (Holocaust) (2014)

Maureen Freedland Social and Environmental Justice
Fund (2016)

Ellen and Henry Funk Family Fund (2006)

Fred and Mary Ann Funk Family Fund (2006)

Garritty-Gokey Fund (2017)

New Fund in 2018

Graw Family Fund

The Graw family established this fund to support the La Crosse community and their favorite charities.

The Guentner-Froegel Family Fund (2003)

James D. and Janice M. Hanesworth Fund (2007)

Harrington Fund (1998)

James and Ellen Heinecke Fund (2003)

Neil, Andy and Geri Hengst Family Fund (retired 2018)
 Nancy Fulkerson Hill and Edwin L. Hill Fund (2016)
 Hutson Family Fund (2002)
 JARD Fund (1993)
 Lillian Kaplan Fund (retired 2018)
 Kerbaugh Family Fund (2016)
 Joseph W. Kotnour, Sr. Family Fund (2001)
 Roy E. and L. Hope Kumm Fund (1986)
 La Crosse Knights of Columbus Charity Fund (2012)
 Sondra and Roger LeGrand Family Fund (2008)
 Warren and Denise Loveland Family Fund (2008)

New Fund in 2018

Kathy and Jack Lucey Family Fund for Alzheimer's

This fund was established by Kathy in honor of her husband, Jack Lucey, and in memory of her brother, Charles Keilholtz, with the intent to primarily advise future grants in the area of Alzheimer's for awareness, education, access to medical care and support of caregivers.

Todd and Deb Mahr Family Fund (2004)
 Bob and Jean Marck Family Fund (2004)

New Fund in 2018

Richard H. Masrud Memorial Fund

The Richard H. Masrud Memorial Fund was established through the estate of Richard H. Masrud by his family. Rick was a cofounder of Scenic Concepts which has been in business in the La Crosse area for over 40 years. Rick also invested in and successfully managed residential and commercial property in the Coulee Region for over thirty years. The family plans to honor Rick's memory, generosity and caring spirit through recommending grants from the fund to charities and interest areas Rick supported during his lifetime.

Amie L. Mathy Fund (1987)
 Charles F. Mathy Family Fund (2010)
 Charles F. Mathy Fund (2006)
 Sandra and Richard McCormick Citizen Diplomacy Fund (2012)
 The Magerus McKinney Fund (2002)
 Donald and Audrey Medinger Family Fund (1998)
 Tom and Ann Monson Family Fund (2005)
 David R. Morrison Family Fund (2013)
 Will and Charlie Nordeen "May the Force Be With You" Fund (2015)
 Paqué Family Fund (2007)
 Ron and Jane Rada Fund (2015)
 Richard T. Record Fund (2011)
 Brian and Karen Rude Family Fund (2000)
 Schilling Family Fund (2009)

New Fund in 2018

Schloegel Family Fund for Kids

Jamie and Joe Schloegel established this donor advised fund after Jamie became the La Crosse Community Foundation's Executive Director in June 2018. The Schloegel's are excited to recommend grants from the fund for programs that support children at risk of abuse in the community. They plan to involve their young children, Brennan and Violet, in grant recommendations to teach them the importance of helping those who are less fortunate.

George and Virginia Schneider Family Fund (1994)
 Kurt and Julie Schroeder Family Fund (2015)
 Jack and Marti Schwem Fund (1999)
 Morris A. & Roberta Anne Severson Fund (2014)
 Shelterbelt Fund (2017)
 Roland & Janeane Solberg Family Fund (2012)
 Stansfield Family Fund (2013)

Strong Girls Strong Women Fund (2017)
 Bradley and Lynn Sturm Family Fund (2008)
 Sullivan Fund (2002)
 Sundet Family Fund (2006)
 Carol and Duane Taebel Family Fund (2006)
 Steve and Suzanne Tanke Family Fund (2007)
 Cheryl Rae Vieth Fund (2009)
 Fred and Deb Wakeen Fund (2013)
 Stephen and Katherine Webster Fund (2016)



Actors in the Enduring Families Project

Designated Funds

A fund where the donor selects one or more nonprofits as the perpetual recipient of the fund's annual distributions. Designated funds are commonly established through estate planning to continue annual support to favorite charities beyond the donor's lifetime.



\$318,285 in
Designated Grants

Ella F. Ambrosius Fund (1975)
Steven and Julianna Blanchar Kindergarten Trip Fund (2002)
Heidi and Scott Blanke Scholarship (2010)
Dr. Archie and Rosemary Britt Family Fund (2013)
Margaret Forseth Burgess Music Fund (2013)
Kathryn, Olaus and Dena Cappelen Fund (2007)
William S. Case Scholarship (1969)
Elizabeth Cason Fund (2011)
CMG Women's Fund (1992)
Dr. Ruth Dalton Fund (2007)

James Gokey Endowment Fund
a.k.a Jim's Grocery Bag (1998)
Gertrude Salzer Gordon Jazz in the Park Fund (1997)
Dr. Gunnar and Mary Baldwin Gundersen Fund (2007)
Reverend Ronald and Merle Gustafson Fund (2003)
Scott Henke Memorial Fund for the Care and Shelter
of Animals (2016)
Nancy Fulkerson Hill and Edwin L. Hill Designated Fund
(2016)
Wayne J. Hood Fund (1982)
Harold L. Isenman Fund (1981)

Jim's Grocery Bag – Schroeder Memorial Fund (2014)
Roch D. Kendrick Memorial Fund (2009)
Betty and Dale Kendrick Scholarship for Studio Art in
Painting (2003)
Tom and Trudy Kennedy Endowment
a.k.a Tom's Grocery Bag (2013)
Kids for Kids Fund – LPEF (2008)
Maureen L. Kinney Fund (2016)
Mitchell-Kruck Scholarship (2007)
Carl Koch and Joyce Heil Fund (2012)
Jason David Koppelman Scholarship Fund (1990)
Gretchen Guernsey Leigh Fund (2007)
La Crosse Public Elementary School Field Trip Fund (2013)
Betty Levinstein Fund-WF (2008)
The Jacob Christian Lillejord Memorial Fund (2008)
Logan Math and Computer Science Scholarship Fund
(2002)
Marie Louise Lokken Fund (2007)
Lommen Boys and Girls Club Scholarship (2000)
Milo and Beverly Mayer Mach Family Fund (2006)

Don Olson Hospitality Scholarship (2004)
William C. Jr. & Scott Pickett Memorial Fund (2012)
Father Christopher Pratt Fund (1987)
Connie Repnik Memorial Fund (2006)
Dr. David L. and Sacia B. Morris Family Fund (2008)
St. Paul's Evangelical Lutheran Church of Onalaska
Endowment Fund (2002)
Joan and Paul Schoenfeld Fund – WF (2008)
Tom and Judy Sleik Family Fund (2013)
Pamela and Richard Strauss Fund – WF (2008)
Duane and Carol Taebel Fund (2007)

New Fund in 2018

Carrol J. Riley DeGier Fund

Carrol J. Riley-DeGier was a devoted member of the animal rescue community. For almost her entire life she was tirelessly rescuing animals of all types, but especially cats and kittens. It was perhaps one of the greatest joys of her life. When she passed away in July of 2016, her family wanted to ensure that the work and selfless efforts that she had exemplified were carried on in her name, so they established the Carrol J. Riley-DeGier Fund to benefit Tabby Town USA in perpetuity. The work of Tabby Town USA's volunteers who foster cats in their homes exemplifies Carrol's energy, dedication and spirit.

Jean L. Foss-Norene A Smith Fund-WF (2011)
Maureen and Robert Freedland-LPEF Fund for Studies of
the Shoah (2007)
Ernest and Olive Gershon Fund (1991)
Jack and Rosie Glendenning Family Fund (1995)

New Fund in 2018

Carol Taebel "Thank a Teacher" Fund

Carol established this fund to support teacher appreciation activities within the School District of La Crosse. As a retired public school teacher, Carol knows firsthand how teaching can often feel like a thankless job even though teachers play a critical role in shaping the future of our next generation. Each year the fund awards a grant to the La Crosse Public Education Foundation which organizes an annual "Thank a Teacher Day" within the district coinciding with National Teacher Appreciation Week in May.

Bernadette Teff Family Fund (2007)
Veronica and Chester Ware Fund (1995)
Harry and Charlotte Woods Family Fund (1990)
Roberta Zurn Fund (2005)

Field of Interest Funds

These funds enable people to pool charitable gifts into one fund that addresses a specific purpose or area of interest. The Foundation's board awards grants to qualified organizations making a difference in that interest area through a competitive grantmaking process.



\$566,568 in
Field of Interest Grants

Roland Beranek Fund (2013)
Coulee Region White Cane Club (2011)
Howard Dahl Fund (1989)
The Elizabeth Fund for Literacy and Well-Being (2016)
Dr. Frank Furlano Family Fund (2002)
Norman L. Gillette, Sr., Family Fund (1992)

Global Awareness Fund (2006)
Alice O. Gordon and Viola Forshler Fund (1940)
Johns Flaherty & Collins-Michael Stoker Memorial Fund (2007/2011)
June Kjome Justice and Peace Fund (2013)
La Crosse Bridge Builders Fund (1999)
Myrick Hixon EcoPark Fund (2014)

National Youth Sports Program Fund (1998)
Louis I. Rehffuss Fund (1981)
Rudy and Jean Schnurrer Fund (2009)
Mary Grace Sieber Fund (2006)
Margery J. Stansfield Fund (2013)
Corinne Zielke Fund (2000)

New Fund in 2018



Field of Interest Fund Spotlight

Robert & Eleanor Franke Charitable Fund

Established through Robert "Bob" Franke's will and a \$7,319,550 gift, this fund benefits many programs that improve the health and well-being of people in need. Bob Franke designated the fund to support grants, scholarships, and community needs in line with the doctrines of the Catholic Church.

Bob was particularly passionate about strengthening Northside La Crosse neighborhoods and bringing people together, programs for affordable housing for people earning low incomes, animal wellness projects, and

projects that promote the influence of churches in our community like outreach to address hunger, and clothing projects.

Bob and Eleanor lived modestly and were very kind, private people committed to doing good in their community. Eleanor passed in 2001, Bob in 2009.

La Crosse Community Foundation is honored to carry on the legacy of Bob and Eleanor Franke and is dedicated to allowing them to continue to do good, forever.



Agency Fund Spotlight



From Executive Director David Stoeffler:

When a group of citizens became concerned about the stability of funding for the School District of La Crosse, they created the La Crosse Public Education Foundation (LPEF). And they turned to a key partner, the La Crosse Community Foundation, to establish an endowment in 1991 to provide perpetual funding for the LPEF mission: investing in school innovation through grants that are awarded to educators for fresh, creative programs and curriculum that cannot be funded through the district's tight budget.

The general endowment provides LPEF with a critical base of annual funding and serves as a catalyst, encouraging broader community support for our mission. Several benefactors have established added funds with LCF to support important initiatives, including staff development, studies of the Holocaust and kindergarten field trips. As an overall result, LPEF has been able to expand its efforts to enhance the education of students in La Crosse public schools.

We appreciate the community leadership of the LCF Board, and the LCF staff is a key resource as we seek to give every student a great experience in school, and improve their chances of succeeding and giving back to our community.



\$248,400

was distributed from
Agency Funds in 2018

Agency Funds

A type of designated fund established by a nonprofit organization for its own benefit. Each year the nonprofit can choose to take the set distribution amount or continue to grow the fund with its annual earnings to eventually become a sustainable revenue stream.

Bethany Lutheran Homes, Inc., Fund (1991)
Boys and Girls Clubs of Greater La Crosse Fund (1985)
Children's Museum of La Crosse Endowment Fund (1998)
Coulee Council on Addictions Endowment Fund (2005)
Family & Children's Center Endowment Fund (1990)
Anita and Robert Funke Historical Society Fund (2004)
Goodwill Industries of North Central Wisconsin Fund (1997)
Sally A. Grimsli Memorial Fund for Northside Elementary-LPEF (2005)
La Crosse Area Family YMCA Fund (2001)
La Crosse Chamber Chorale Fund (2002)
La Crosse Concert Band Fund (2004)
La Crosse County 4-H Endowment Fund (2010)
La Crosse County Historical Society Endowment Fund (1990)
La Crosse Public Education Foundation Endowment Fund (1991)
Amie L. Mathy Center for Recreation and Education Endowment Fund (2005)
Mental Health Coalition Endowment Fund (2006)
Onalaska Foundation for Educational Excellence Endowment Fund (1998)
Pettibone Park Fund (1992)
Salvation Army Endowment Fund (1992)

Stars of Tomorrow Endowment Fund (2006)

Swantz Fund-LPEF (2000)

United Fund for the Arts and Humanities Endowment Fund (1992)

Wishland Pony Express Fund (1995)

Women's Fund of Greater La Crosse Fund (2016)

Other Funds

Unrestricted gifts to the Foundation support the Community Giving Fund. The Foundation's board awards grants to qualified organizations from this fund through a competitive grantmaking process facilitated by the program director.

LCF Administrative Fund

Community Giving Fund

PMJ Fund (2002)

La Crosse SOUP Fund



New Fund in 2018

La Crosse SOUP Fund

La Crosse Community Foundation established the La Crosse SOUP Fund in 2018 when a fiscal sponsor relationship was finalized allowing La Crosse SOUP to continue its mission of quarterly crowd-sourced micro-granting events without becoming a federally recognized nonprofit organization.



Jamie presents a grant to La Crosse SOUP

Scholarship Funds

A fund designed to provide financial support for students pursuing post-secondary education. Donors establish the scholarship criteria, and the Foundation's staff ensures awards are made in accordance with set guidelines.



153 students

received LCF
scholarships in 2018

totaling **\$236,462**
with an average scholarship
amount of \$1,562

AAUW (American Association of University Women)
La Crosse Branch Scholarship Fund (2013)

New Fund in 2018

Tammy and Allen Becker Family Pay It Forward Scholarship Fund

Tammy and Allen Becker established this fund as a way to give back to the community that has supported the growth and success of their business, Becker Tax & Bookkeeping, LLC. The fund provides an annual scholarship for a Central High School graduating senior pursuing a degree in accounting at either the University of Wisconsin-La Crosse or Western Technical College. The Beckers hope this scholarship fund inspires not only their own children to learn to "pay it forward," but the scholarship's recipients as well.

Mary Jane Bice Fund (1985)

Borton Construction Scholarship at Holmen (2008)

Borton Construction Scholarship at Logan (2008)

Borton Construction Scholarship at Luther (2008)

Valerie Burman Art Plus Scholarship Fund (2016)

James R. Conway Class of 1955 Logan High
Scholarship (2009)

Coulee Region Engineering Scholarship Fund (1993)

Peter DeCicco Scholarship (1992)

Carol Dobrunz Memorial Scholarship (2014)

Family Playhouse Theater Scholarship (2003)

D. E. Field Scholarship (2007)

Gertrude and Donald "Sandy" Gordon, Jr., Jazz
Scholarship (1998)

Kent Grimslid Memorial Music Scholarship for Onalaska
High School (2014)

New Fund in 2018

Dorinda Hawk Music Scholarship Fund

The Dorinda Hawk Music Scholarship was established through a bequest to the La Crosse Community Foundation by Dorinda Hawk, a longtime classical piano teacher in the La Crosse area. This scholarship supports an area high school student who plans on pursuing a music piano/keyboard major. A secondary consideration is for a student majoring in Music Education with a preference for a student whose main instrument is piano.

Neil P. Hengst Extra Effort Scholarship (2007)

Ann Henke Scholarship Fund (2012)

Josephine Hintgen Fund (1982)

Hood-Weese-Miller Scholarship (2010)

Inez and Nick Konas Memorial Scholarship (2017)

Jay F. Leinfelder, Jr. Memorial Scholarship (2015)

Harold E. Lemke Fund (1991)

Logan Opportunity Scholarship Fund (1992)

Kaitlin Elizabeth Mahr Memorial Scholarship (2007)

Nicholas Byrne Padesky Scholarship (2015)

Norma J. Valley Panka & William J. Panka Scholarship
Fund (2012)

Mark David Peacock Memorial Scholarship (2013)

Robert and Ruth Pribek Memorial Scholarship (2017)

John and Adeline Rice Scholarship Fund (2002)

Rockin Robyn Scholarship (2016)

James G. Sauer Scholarship (2011)

Ralph E. Schultz Scholarship Fund (1996)

John and Ruth Sherman Scholarship Fund (2008)

Burton C. Smith Scholarship Fund (1983)

Randy Smith Leadership Fund (2001)

William E. Storandt Scholarship (2005)

William and Lorna Vafeas Art Scholarship (1995)

Nina Vanderzee Memorial Scholarship (2016)

Vivian and Clayton Veum Scholarship (1995)

Donald P. Weber Veteran Scholarship Fund (2017)

David and Sandra Whiteley Scholarship (2007)

Supporting Organizations

An excellent alternative to a private foundation, supporting organizations do not pay excise taxes or tax preparation fees, and no annual distributions are required. Donors maintain personal involvement in grant making, while receiving the favorable tax treatment of a public charity. The Foundation handles grant administration due diligence and all reporting requirements.

Robert & Eleanor Franke Charitable Foundation, Inc.
(dissolved 2018)

2018 DONOR RECOGNITION

On behalf of the entire La Crosse area, **thank you to those who contributed to La Crosse Community Foundation in 2018!** You are part of a long legacy of philanthropic citizens committed to providing critical community support where it's needed most now, and in perpetuity.

ADMINISTRATIVE FUND

Tim and Sue Durtsche Family Charitable Fund of
American Endowment Foundation
Fowler and Hammer Construction
Maureen Kinney Fund of LCF

JAMES AND ELLYN ASH FAMILY FUND

Ellyn M. Ash

AMERICAN ASSOCIATION OF UNIVERSITY WOMEN-LA CROSSE BRANCH-SCHOLARSHIP FUND

American Association of University Women-
La Crosse Branch
Anita K. Evans and Larry Lebiecki
Festival Foods
Alice Engelhard Gassere
Lois A. Gilbert
John and Marilyn Hempstead
Mike Holler
Dr. Kenneth and Linda Kempf
George and Betty Kruck
Curtis D. Miller and Andrea Hansen
Marcia Newquist
Drs. Robert and Silvana Richardson
Susan R. Rindner
Dr. Stephen and Katie Webster
Alan and Jane Wernecke
Daryl and Margaret Wood
Margaret M. Zappen

In memory of Dorothy "Dottie" Kruse

Fred and Susan Heuer
American Association of University Women-
La Crosse Branch
Paul and Beverly Bodine

In memory of Mary Reiman

American Association of University Women-
La Crosse Branch

In memory of Patricia Sheehan

American Association of University Women-
La Crosse Branch

Ardus E. Cleveland
Fred and Susan Heuer

In memory of Karen Wilson

Kimberlee J. Burrington

JEAN GITZ BASSETT FUND

In memory of Jean Gitz Bassett
Estate of Pricilla Jean Gitz Bassett
Brian and Karen Rude

TAMMY AND ALLEN BECKER FAMILY PAY IT FORWARD SCHOLARSHIP FUND

Allen and Tammy Becker

BLAHNIK-NAUGLER HELP FUND FOR WOMEN *In honor of James and Rebecca Naugler's anniversary*

Virginia E. Naugler

In honor of Jim Naugler's birthday

Virginia E. Naugler

In honor of Rebecca and Atty. James Naugler

Virginia E. Naugler

In honor of Rebecca Naugler's birthday

Virginia E. Naugler

JULIANNA AND STEVEN BLANCHAR KINDERGARTEN TRIP FUND

Russel and Diane Ford
La Crosse Public Education Foundation, Inc.

In memory of Virginia Anthony, Ned Barstad, JoAnn M. Carr, Bette Comstock, Deanna Hintz, Kalen Islam, Al Lueck, Mike Raasch, Violet Rediske, Viola Sauer, Suzy Schultz, Esther Slezniow, and Richard "Dick" Wolfe

John and Susan Blanchar

MLB MKB BOTTCHE FAMILY FUND

Dr. Michael and Mary Bottcher

BREKKE FAMILY FUND

Sandra Brekke

LA CROSSE BRIDGE BUILDERS FUND *In honor of John Magerus*

Deborah Hoskins

VALERIE BURMAN ART PLUS SCHOLARSHIP FUND

Ronald Burman
Daniel J. Devitt and Ruth Cade Devitt
David and Gail Dussere
Russel C. Evans

CHRIST EPISCOPAL CHURCH HISTORIC PRESERVATION ENDOWMENT FUND

Dr. John and Cathy Pederson

ARDUS AND JOHN CLEVELAND FAMILY FUND *In honor of Ardus Cleveland's birthday*

John and Ardus Cleveland

LA CROSSE CONCERT BAND ENDOWMENT FUND

Anonymous
Anita K. Evans and Larry Lebiecki
La Crosse Concert Band
Gordon and Diane Stewart

COULEE REGION ENGINEERING SCHOLARSHIP FUND

In memory of Bruce Staples
Paul and Judy Ulland

DANIEL'S SONG

Minda and Mark Chamberlain, J.D. and C.P.A.

CARROL J RILEY DECIER FUND

Nancy A. Gerrard and Atty. Richard Staff
Jay Lokken and Ken Riley

DURTSCHKE FAMILY FUND

Tim and Sue Durtsche Family Charitable Fund at
American Endowment Foundation
Dr. Tim and Sue Durtsche

THE ELIZABETH FUND FOR LITERACY AND WELL-BEING

Anonymous

CHAD ERICKSON MEMORIAL PARK FUND

Chad's Champs Fund for the Miracle Field Fund
of LCF

In memory of Mary Furlong

Thomas and Jill Barland
Cleary-Kumm Foundation, Inc.
Friends of the La Crosse Public Library, Inc.
Alberta Gund
Thomas and Sandra Kapellas
Joseph and Barbara Kruse
Drs. Mark and Sandra Perpich
Rosalie Schnick
Linda Sherwood
Dr. Paul and Jane Steingraeber
Joyce Wichelt
Marc and Ruth Williams
Jerome and Patt Boge

FOWLER AND HAMMER FUND

Fowler and Hammer Construction

MAUREEN AND ROBERT FREEDLAND COMMUNITY FUND FOR STUDIES OF THE SHOAH (HOLOCAUST)

Anita K. Evans and Larry Lebiecki

In honor of Maureen Freedland

Dr. Robert Freedland

In memory of Jean and Fred Feran and Isabelle and Sumner Freedland

Dr. Robert Freedland and Atty. Maureen
Freedland

MAUREEN AND ROBERT FREEDLAND - LPEF FUND FOR STUDIES OF THE SHOAH

La Crosse Public Education Foundation, Inc.

In honor of Maureen Freedland

Dr. Robert Freedland

In memory of Jean and Fred Feran and Isabelle and Sumner Freedland

Dr. Robert Freedland and Atty. Maureen
Freedland

ROBERT & ELEANOR FRANKE CHARITABLE FUND

Robert and Eleanor Franke Charitable
Foundation

GUENTNER-FROEGEL FAMILY FUND

Anita J. Froegel

MAUREEN FREEDLAND SOCIAL AND ENVIRONMENTAL JUSTICE FUND

In honor of Maureen Freedland

Dr. Robert Freedland

In memory of Jean and Fred Feran and Isabelle and Sumner Freedland

Dr. Robert Freedland and Atty. Maureen
Freedland

ELLEN AND HENRY FUNK FAMILY FUND

Henry C. Funk, Jr.
Kidner and Funk Donor Advised Fund at
Schwab Charitable

In honor of Henry and Ellen Funk

Joseph and Paloma Shillings

In memory of Ellen Funk

Anonymous
Kari L. Anderson
Susan Bennett
James Canales
Cleary-Kumm Foundation, Inc.
Fernando and Ginger Corrada
Anna M. Cronin
Kenneth and Shirley Cvikota
Theresa Daley-Mack and Paul Mack
John Evans and Janet McCarthy
Bridget Flood
William and Janet Flynn
Jo Ann Funk
Dr. Michael and Maureen Funk
Susan Funk
Sheila Garrity
Hawkins Ash CPAs LLP
Lara Hensel
David W. Kelley
Terry Kidner
Jeannine Lee
Michael and Peggy Lyga
Mary M Funk Trust of 1991
Robert and Patricia McLoone
Katheryne Moran
Greg Schillings
Christopher and Mary Schneider
Kathleen Leary and Fredrick Schneider
John and Victoria Schneider
Ed Tanke
Dr. John and Bert Ujda
Margaret Van Valkenburg
Beata Wilson
Deborah Zvosec

FRED AND MARY ANN FUNK FAMILY FUND

Robert and Patricia McLoone

GARRITY-COKEY FUND

Sheila Garrity

In memory of Jim Gokey

Atty. James and Diana Birnbaum

COMMUNITY GIVING FUND

Anonymous (4)
Robert J. Carney and Christine S. Haskell
Minda and Mark Chamberlain, J.D. and C.P.A.
Dr. Ronald and Janet Chaney
Michael and Barbara Chase
James and Karen Curtis
David and Sacia Morris Charitable Remainder
Trust dated 12/29/1998
Michael and Carmen DeYoe
Dr. Michael and Laurie Dolan
Dr. Gunnar and Mary Baldwin Gundersen Fund
of LCF
Gundersen Health System
Peter and Janice Gutierrez
Vincent and Janice Hatt
Ralph and JoAnn Heath III
Dr. Joe and Atty. Pat Heim
Andy and Geri Hengst
Betty Heuslein
Robert and Karen Hillary
Joyce E. Holthaus
Donald and Virginia Iverson
Mayo Foundation for Medical Education
and Research
Nancy Medinger
Dr. David L. and Sacia B. Morris Fund
of LCF
Dr. David and Ann Nelson
James and Donna Omernik
The Honorable Dale and Clara Pasell
Rabbi Simcha and Keren Prombaum
Ron and Jane Rada
Michael and Therese Regner
Riley Reinhart
Jerome Mooney
Martin R. Riskin
Dr. Cameron and Carlene Roberts
Jack and Judy Rusch
Schilling Family Fund of LCF
Jacob Sciammas
Dr. Sam and Jean Skemp
Karol Smith
Michael and Kris Smuksta
Dr. Paul and Jane Steingraeber
Amy Swailes
Bob and Susan Swingen
Ed Tanke
Rev. Allan and Carla Townsend
Dr. Ricky and Joan Waniger
Marc and Ruth Williams
John and Wanda Wochos

In honor of Pat Heim's retirement

Atty. Brent and Ellen Smith

In honor of Opland grandchildren

Russell and Peggy Opland

In honor of Scott Rada's birthday

Anonymous (2)

In memory of Ingrid Brindley

Barbara Jordan

In memory of Michael & Mark Collins

Thomas and Bonnie Holzer

In memory of Betty Levinstein

Dr. Richard and Pam Strauss

In memory of Kaitlin Mahr

Dr. Todd and Deb Mahr

In memory of the McCarthy and Smetana families

Wenzel and Edna Smetana

In memory of Helen O'Sullivan

RSM US LLP

In memory of Dave Wolfert

Jean M. Wolfert

GRAW FAMILY FUND

Richard and Barbara Graw

REV. RONALD AND MERLE GUSTAFSON FUND

Rev. Ronald and Merle Gustafson

JAMES D. AND JANICE M. HANESWORTH FUND

Sea-Land Chemical Company

DORINDA HAWK MUSIC SCHOLARSHIP FUND

Alan and Rosanne Schulz

SCOTT HENKE MEMORIAL FUND FOR THE CARE AND SHELTER OF ANIMALS

Sara Henke
Arden Markos

In memory of Scott Henke

Robin Elsea

ANN HENKE SCHOLARSHIP FUND

Arden Markos
Dr. Dennis and Sharon Ryan

2018 DONOR RECOGNITION

NEIL P. HENGST EXTRA EFFORT SCHOLARSHIP FUND

Neil, Andy and Geri Hengst Family Fund of LCF

NANCY FULKERSON HILL AND EDWIN L. HILL FUND

Edwin Hill and Nancy Fulkerson Hill

JAMES GOKEY ENDOWMENT FUND AKA JIM'S GROCERY BAG FUND

David and Judy Bouffleur
Patrick Brunet
Dr. Frank Cadwell and Kristi Shaw Cadwell
Russell and Diane Ford
Dr. Michael and Mary Ann Garrity
Sheila Garrity
Wayne J. Hood, Jr.
Bill and Mary Huser
Jane Klekamp
Bob and Jean Marck Family Fund of LCF
David and Sonja Sue Olson
Sullivan Fund of LCF
Daryl and Margaret Wood

In memory of Dan Garrity and Jim Gokey

Karen K. Garrity

In memory of Jim Gokey

John and Joyce Gokey
Michael S. Gokey
Paul and Colleen Gokey

"JIM'S GROCERY BAG" GOLF OUTING SPONSORS

ALM Holding Company
Altra Federal Credit Union
Beer By Bike Brigade
Bossard Parke LTD
Coulee Bank
Courtesy Corporation
David and Sacia Morris Charitable Remainder Trust
Atty. Steve and The Honorable Gloria Doyle
Fitzpatrick Skemp and Associates, LLC
Fowler and Hammer Construction
Sheila Garrity
Tim and Ann Garrity
Guillien Van Nuland, LLC
Gundersen Health System
Roxanne Hafner
Hale, Skemp, Hanson, Skemp and Sleik
The Honorable Scott and Sue Horne
Johns, Flaherty and Collins, S.C.
Johnson Block and Co., Inc.
Jane Klekamp
Kwik Trip, Inc.
La Crosse County Bar Association
Mary C. Lansing

The Honorable Elliot M. Lavine
Mayo Foundation for Medical Education and Research
Mikat Public Relations, Inc.
Modern Crane Service, Inc.
David R. Morrison, C.P.A.
Michael J. Mulroy
O'Flaherty, Heim, Birnbaum, Kirchner, and Curtis S.C.
Tim Padesky and Tara Johnson
The Honorable Dale and Clara Pasell
Jamie and Joe Schloegel
Atty. Tom and Judy Sleik
Atty. John Stuber and The Honorable Ramona Gonzalez
Travel Leaders/Golis Avenues of Travel
Trust Point, Inc.

JOHNS FLAHERTY COLLINS-MICHAEL STOKER MEMORIAL

Ella Stoker
Sullivan Fund of LCF

LILLIAN KAPLAN FUND

Women's Fund of Greater La Crosse, Inc.

JUNE KJOME JUSTICE AND PEACE FUND

Sullivan Fund of LCF

In honor of June Kjome

Sheila Garrity
Susan T. Hessel
George and Betty Kruck
Beth Moore

JASON DAVID KOPPELMAN SCHOLARSHIP

Dr. Kent and Jan Koppelman

LA CROSSE COUNTY 4-H FUND In memory of Ashley Goyette

Linda L. Saley
Robert Matysik

In memory of Mary L. Sacia

Robert Matysik

JAY F. LEINFELDER, JR. MEMORIAL SCHOLARSHIP

John and Barbara Leinfelder

LA CROSSE KNIGHTS OF COLUMBUS CHARITY FUND

In honor of R.M.A Ciechanowski, DDS's birthday
Walter and Ann Baltz

LOGAN OPPORTUNITY SCHOLARSHIP

Solberg Fund of LCF

MARIE LOUISE LOKKEN FUND

Burton and Norma Altman
Heather Armstrong
Thomas and Jan Brock
Cameron Carey
Robert J. Carney and Christine S. Haskell
Daniel Christen
Dr. Mark and Jeanne Connelly
Renee Dettmann
Anita K. Evans and Larry Lebiecki
Ward and Kim Evenson
Brian Fanciulli
Judy Ford
Diane Foust
Mary Ann Gschwind, FSPA
Dr. Robert Freedland and Atty. Maureen Freedland
Nancy A. Gerrard and Attn. Richard Staff
Chad E. Gilbeck
Ian Lokken Goodnow
Robert and Jean Goodnow
Roger and Charlotte Grant
Karl and Joan Halverson
Shawn Hanson
Rosemary Martin Hayduk and Lani Hayduk
Hegge Construction
Dr. Joe and Atty. Pat Heim
Theda, Melissa and Virgil Holder
The Honorable Scott and Sue Horne
Christine A. Kahlow
Dr. Karen and Michael Keil
Jennifer L. Kirsch
Gregory and Susan Knorr
Scott J. Koenen and Katie Rowan-Koenen
La Crosse Symphony Orchestra, Inc.
Charles and Laura Leder
Bill and Kay Leonard
Jay Lokken and Ken Riley
Dr. Michael and Carol Mader
Scott Mathy
Rick and Annette Mikat
Betsy Morgan
David R. Morrison, C.P.A.
James and Linda Pake
George Parke III
Jennifer Parke
James Parker and Elise Denlinger
Lance and Susan Paulson
Tan Pham and Susan Niedzwiecki-Pham
Ron and Jane Rada
Richard T. Record
David H. Reedy
Eva Marie and Todd Restel
Dr. Richard and Lisbeth Reynertson

Bonita Sacia
Kim Savor
Rick and Julie Diermeier Donor Advised Fund at Schwab Charitable
Debra Seidel
Sandra K. Sieber
Thomas and Marlene Sherwin
Atty. Brent and Ellen Smith
Karol Smith
Dr. Richard and Carolyn Smith
Richard and Pat Spencer
Jonathan Steede
Bradley and Lynn Sturm
Michael and Mary Tollefson
Atty. Allen and Lynn Trapp
Gregory and Paula Wegner
Paul and Suzanne Weibel
Chris and Beth Weiss
Arthur and Debra Wilkening
Jane C. Wood

In honor of Mary Ann Gschwind, FSPA

Darryle and Marvin Clott

LA CROSSE PUBLIC EDUCATION - SWANTZ FUND

La Crosse Public Education Foundation, Inc.

KATHY AND JACK LUCEY FAMILY FUND FOR ALZHEIMER'S

In honor of Jack Lucey

Jack and Kathy Lucey
Lynn Archibald Smith
John and Kay Krueger

In honor of Jack Lucey's birthday

Jada Lucey Martinez

In honor of Kathy & Jack Lucey Family Fund

Colleen Royal

In memory of Charles Keilholtz

Jack and Kathy Lucey

In memory of Josephine Giacalone Zizzo

Jada Lucey Martinez

LA CROSSE SOUP FUND

La Crosse SOUP
La Crosse Community Foundation

MILO AND BEVERLY MAYER MACH FAMILY FUND

Beverly J. Mach

MAGERUS-MCKINNEY FUND

John Magerus, Ph.D. and Everett McKinney, Ph. D

The donors listed in this report contributed to La Crosse Community Foundation during the 2018 calendar year. Listing donors' names is just one way we can show our appreciation for the many friends who support our mission, and the giving priorities of our named funds.

Please call the Foundation at **(608) 782-3223** if you have a question or correction. Being a good steward of our charitable gifts is our highest priority. We apologize in advance for any inaccuracies.

TODD AND DEB MAHR FAMILY FUND
In memory of Kaitlin Mahr
Dr. Todd and Deb Mahr

BOB AND JEAN MARCK FAMILY FUND
Susan and William Carskadon
Sibyl E. Floyd
Roger and Sharon Imes
John and Rita Jenks
Dick and Sally Koehler
Lynne M. Leuthe
Patricia A. Mertens
Terry Mikrut
James and Frankie Saxton
Allan and Dorothy Schilling
Dr. Richard and Pam Strauss

RICHARD H. MASRUD MEMORIAL FUND
Pat McGuire

CHARLES F. MATHY FUND
B2West Corporation
William and Sandra Hatch
Dennis Kreuser
George and Connie Mumau
Patrick and Beth Pederson
Paul and Tara Wetzel

AUDREY AND DONALD MEDINGER FAMILY FUND
John and Dee Medinger
David and Sonja Sue Olson

In honor of John Medinger
Lindsey Turk

In memory of Sharon Price
Linda Bechly

NICHOLAS BYRNE PADESKY SCHOLARSHIP FUND
Tim Padesky and Tara Johnson

ROBERT AND RUTH PRIBEK MEMORIAL SCHOLARSHIP FUND
Thomas Pribek

ROCKIN ROBYN SCHOLARSHIP FUND
Lynita Docken
Mary Kate Franklin

Lorene K. Harris
Laura and Todd Roessler
Jennifer L. Schaller
Catherine Smith-Ohm
West Prairie Winery, LLC

In memory of Robin Docken
Jean Jorde

SCHLOEGEL FAMILY FUND FOR KIDS
American Online Giving Foundation
Jamie and Joe Schloegel

RUDY AND JEAN SCHNURRER FUND
In memory of Jean and Rudy Schnurrer
Bob and Janet Ollech

JACK AND MARTI SCHWEM FUND
Martha Schwem

MORRIS A. AND ROBERTA ANNE SEVERSON FUND
In memory of Morris and Roberta Severson
John McDaniel and LoriLee Severson
McDaniel

STANSFIELD FAMILY FUND
Stansfield Vending, Inc.

STRONG GIRLS STRONG WOMEN FUND
Tim Padesky and Tara Johnson

TOM AND JUDY SLEIK FAMILY FUND
Atty. Tom and Judy Sleik

BURTON C. SMITH SCHOLARSHIP
In honor of Patricia Connell
Marliyn J. Connell

In honor of Patricia J. Connell's birthday
Thomas Connell
Doug and Sharon Erler

ROLAND AND JANEANE SOLBERG FAMILY FUND
In memory of Roland Solberg
Richard and Mary Abraham
Joseph and Jane Barstow
Brenda Brandt

Nicole and Jonathan Dorn
Daniel Ferries
David and Rose Krieg
Carolyn Lawrence
David and Gayle Manore
Jacqueline Norvell
Dr. Justin Odulana
Tim Padesky and Tara Johnson
David and Eileen Paudler
Maryellen Paudler
Susan Paudler
Earland Sagen
Gary and Susan Schettler
Kathryn Schroeder
Diane and David Schumacher
David and Jane Smith
Michael and Joan Solberg
Doris Thompson
Marilyn Van Wyk
Nancy Way
Chris and Beth Weiss
Rosemary B. Werner
Daryl and Margaret Wood

ST. PAUL'S EVANGELICAL LUTHERAN CHURCH OF ONALASKA FUND
In memory of Bernard & Mary Pralle
Estate of Bernard and Mary Pralle

BRADLEY AND LYNN STURM FAMILY FUND
Bradley and Lynn Sturm

CAROL AND DUANE TABEL FAMILY FUND
In memory of Duane Tabel for Father's Day
Scott and Paula Tabel

CAROL TABEL "THANK A TEACHER" FUND
La Crosse Public Education Foundation, Inc.
Carol Tabel

TOM & TRUDY KENNEDY ENDOWMENT FUND AKA TOM'S GROCERY BAG FUND
Terry P. Christopherson and Teresa R. Tanke
Thomas F. Evert
Ron and Debbie Johnson
Tom and Trudy Kennedy
Robert and Patricia McLoone
David and Stephanie Reinke

Richard Walz
Phyllis and James Warren

In honor of Mickelson's 50th Anniversary
Thomas F. Evert

DONALD P. WEBER VETERAN SCHOLARSHIP FUND
John and Lois England
David and Rene Hoffmann
UW-La Crosse Foundation
Weber Family Foundation Inc

WOMEN'S FUND OF GREATER LA CROSSE
Lillian Kaplan Fund of LCF
Women's Fund of the LCF

In honor of Betsy Morgan
Deborah Hoskins

In memory of Charlotte Price
Wayne and Amy Delagrave

DAVID AND SANDRA WHITELEY SCHOLARSHIP
David L. Whiteley



2018 FINANCIAL REPORT

This report is a summarized financial statement. The complete audited financial statements and IRS FORM 990 are available on our website.

La Crosse Community Foundation and Supporting Organizations

Consolidated Statement of Activities

	YEAR ENDED DECEMBER 31,	
	2018	2017
SUPPORT AND REVENUE		
Public support - contributions and bequests	\$ 2,077,138	\$ 694,983
Net investment return	(3,214,872)	7,304,731
Other income	43,669	42,943
Change in perpetual trusts	(596,475)	472,141
TOTAL SUPPORT AND REVENUE	(1,690,540)	8,514,798
EXPENSES		
Grants and scholarships	17,618,112*	2,428,063
Program-related expenses	61,503	3,509
Support services:		
Management and general	486,129	551,775
Development	36,881	32,067
TOTAL EXPENSES	18,202,625	3,015,414
CHANGE IN NET ASSETS	(19,893,165)	5,499,384
NET ASSETS AT BEGINNING OF YEAR	61,943,532	56,444,148
NET ASSETS AT END OF YEAR	\$ 42,050,367	\$ 61,943,532

*Includes \$14,639,100 in grants from the Robert and Eleanor Franke Charitable Foundation to two supporting organizations upon its 2018 dissolution.

Auditors: Johnson Block CPAs; Trustee: Trust Point

La Crosse Community Foundation and Supporting Organizations

Consolidated Statement of Financial Position

	DECEMBER 31,	
ASSETS	2018	2017
Cash and cash equivalents	\$ 251,606	\$ 182,124
Investments	41,062,588	61,678,140
Leasehold Improvements, fixtures and equipment, net of accumulated depreciation of \$23,090 in 2018 and \$23,153 in 2017	15,706	19,472
Contributions and bequests receivable	892,500	-
Other assets	53,469	53,294
Beneficial interest in perpetual trusts	<u>3,799,482</u>	<u>4,395,957</u>
TOTAL ASSETS	\$ <u>46,075,351</u>	\$ <u>66,328,987</u>
LIABILITIES AND NET ASSETS		
LIABILITIES		
Payroll taxes payable	\$ 966	\$ 994
Grants payable	308,196	145,781
Agency endowment funds	<u>3,715,822</u>	<u>4,238,680</u>
TOTAL LIABILITIES	<u>4,024,984</u>	<u>4,385,455</u>
NET ASSETS		
Net assets without donor restrictions		
Undesignated funds	862,820	970,766
Community Giving Fund	6,455,569	7,554,983
Special Initiative Fund	144,161	145,161
Field of interest funds	9,377,535	3,446,375
Donor designated funds	11,361,188	12,694,672
Donor advised funds	9,157,112	10,201,876
Supporting organizations	-	<u>7,511,247</u>
Total net assets without donor restrictions	37,358,385	42,525,080
Net assets with donor restrictions	<u>4,691,982</u>	<u>19,418,452</u>
TOTAL NET ASSETS	<u>42,050,367</u>	<u>61,943,532</u>
TOTAL LIABILITIES AND NET ASSETS	\$ <u>46,075,351</u>	\$ <u>66,328,987</u>

Being good stewards of our donors' charitable giving is our top priority.

The Foundation strives to maximize investment income while following formal, yet flexible investment guidelines that incorporate prudent risk parameters, appropriate asset guidelines, and realistic return goals.

The Board of Directors bears the overall fiduciary responsibility for the Foundation. The board appoints and empowers a Finance and Investment Committee comprised of individuals with extensive business and investment backgrounds for ongoing investment guidance, monitoring, and oversight. This committee meets quarterly and reports to the full board.

Our investment portfolio is managed by Trust Point. The Foundation's investment objectives are detailed in our Statement of Investment Objectives and Policies document which is reviewed annually by the Finance and Investment Committee to ensure the relevance of its contents to current capital market conditions and the needs of the Foundation. Trust Point representatives attend Finance and Investment Committee meetings to report the portfolio's performance. Information regarding our investment performance is available upon request.



LA CROSSE
COMMUNITY
FOUNDATION

401 Main Street, Suite 205
La Crosse, WI 54601

NONPROFIT ORG
U.S. POSTAGE
PAID
LA CROSSE, WI
PERMIT #230



La Crosse Community Foundation, founded in 1930, made its first grant in the amount of \$200 in 1946. In 2018, we distributed over \$2,979,012 to hardworking community organizations. And since our inception 88 years ago, we've awarded over \$55,000,000!

2018 At A Glance

88 YEARS
of local
philanthropic
leadership

**TOTAL
ASSETS**

*\$46.1
Million*

**TOTAL
FUNDS**

232

**NEW
FUNDS**

13

**TOTAL
GIFTS**

\$2,077,138

**#
GRANTS**

700

**\$
GRANTS**

\$2,979,012

FOR THE GOOD OF LA CROSSE COUNTY. FOREVER.

Check out our website! laxcommfoundation.com



(608) 782-3223